



Star Gulf: BP WA Topsides STB-1 Project

Case Study – Star Gulf

Client: Star Gulf

Project: BP WA Topsides installation, Baku

Scope of work: 2 x 120te Winches and 2 x 180kW Diesel HPUs on board STB-1 barge

Date: 2005

Specification:

- 120 Tonnes First Layer Pull
- Wire Capacity: 1575m of 64mm diameter wire rope
- ACE Gear drive (with Hagglund motors)
- Level wind unit to suit wire diameter
- Powered by ACE 180Kw Diesel Hydraulic Power Units (housed within fully fabricated protective framework; 180kW Volvo Diesel Engines and Denison Goldcup PI4 pump)



 **ACE Winches**
THE DECK MACHINERY SPECIALISTS

Case Study – Star Gulf



Manufacturing Process

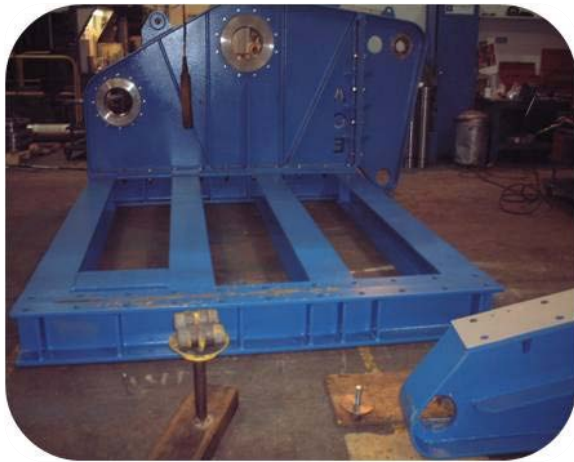


 **ACE Winches**
THE DECK MACHINERY SPECIALISTS

Case Study – Star Gulf



Manufacturing Process



 **ACE Winches**
THE DECK MACHINERY SPECIALISTS

Case Study – Star Gulf



120te SWL Deployment Winches



 **ACE Winches**
THE DECK MACHINERY SPECIALISTS

Case Study – Star Gulf



180kW Volvo Diesel Hydraulic Power Unit



 **ACE Winches**
THE DECK MACHINERY SPECIALISTS

Case Study – Star Gulf



Successful Project Completion

WA Topside deck
onboard STBI
transportation barge



 **ACE Winches**
THE DECK MACHINERY SPECIALISTS